

MLS Area 8E

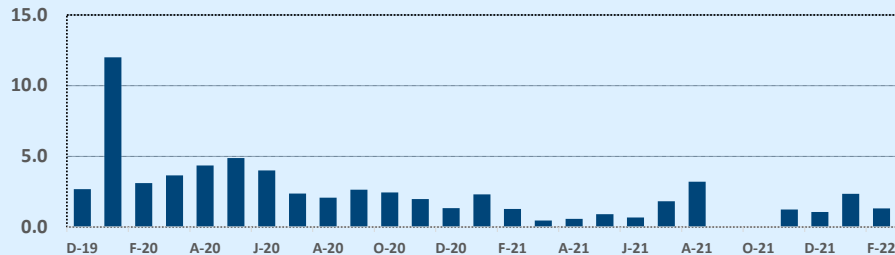
Residential Statistics

Listings	This Month			Year-to-Date		
	Dec 2021	Dec 2020	Change	2021	2020	Change
Single Family Sales	11	24	-54.2%	207	219	-5.5%
Condo/TH Sales	7	4	+75.0%	61	52	+17.3%
Total Sales	18	28	-35.7%	268	271	-1.1%
New Homes Only	--	1	--	3	13	-76.9%
Resale Only	18	27	-33.3%	265	258	+2.7%
Sales Volume	\$30,226,338	\$57,838,293	-47.7%	\$554,304,178	\$460,653,445	+20.3%
New Listings	5	15	-66.7%	294	365	-19.5%
Pending	--	--	--	--	--	--
Withdrawn	1	2	-50.0%	20	24	-16.7%
Expired	1	2	-50.0%	20	24	-16.7%
Months of Inventory	1.3	1.3	+2.6%	N/A	N/A	--

Average	This Month			Year-to-Date		
	Dec 2021	Dec 2020	Change	2021	2020	Change
List Price	\$1,679,989	\$2,151,771	-21.9%	\$2,054,001	\$1,755,509	+17.0%
List Price/SqFt	\$569	\$539	+5.7%	\$607	\$471	+29.1%
Sold Price	\$1,679,241	\$2,065,653	-18.7%	\$2,068,299	\$1,699,828	+21.7%
Sold Price/SqFt	\$560	\$520	+7.7%	\$619	\$457	+35.5%
Sold Price / Orig LP	99.2%	97.3%	+2.0%	103.0%	97.0%	+6.1%
Days on Market	45	64	-29.3%	36	55	-34.1%

Median	This Month			Year-to-Date		
	Dec 2021	Dec 2020	Change	2021	2020	Change
List Price	\$1,465,000	\$2,087,500	-29.8%	\$1,650,000	\$1,395,000	+18.3%
List Price/SqFt	\$506	\$478	+5.9%	\$562	\$414	+35.7%
Sold Price	\$1,443,119	\$1,943,750	-25.8%	\$1,714,250	\$1,375,000	+24.7%
Sold Price/SqFt	\$505	\$454	+11.1%	\$578	\$406	+42.4%
Sold Price / Orig LP	98.9%	97.5%	+1.4%	100.0%	97.3%	+2.8%
Days on Market	25	36	-30.6%	10	30	-68.3%

Months of Inventory - Last Two Years

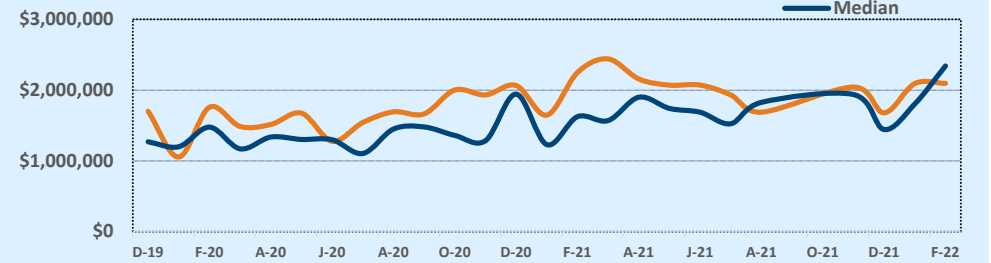


Independence Title

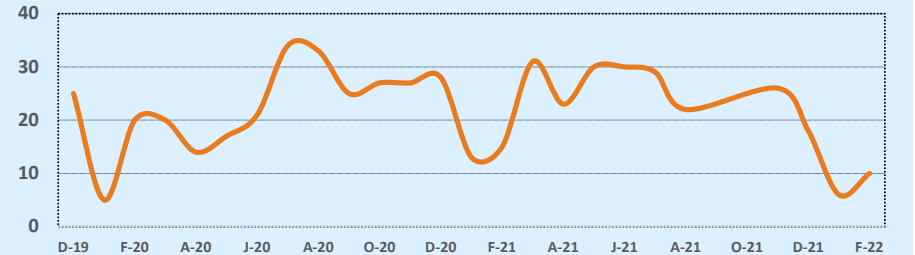
December 2021

Price Range	This Month			Year-to-Date		
	New	Sales	DOM	New	Sales	DOM
\$149,999 or under	--	--	--	--	--	--
\$150,000- \$199,999	--	--	--	--	--	--
\$200,000- \$249,999	--	--	--	--	--	--
\$250,000- \$299,999	--	--	--	--	--	--
\$300,000- \$349,999	--	--	--	3	2	61
\$350,000- \$399,999	--	--	--	5	5	5
\$400,000- \$449,999	--	--	--	2	4	9
\$450,000- \$499,999	--	1	16	6	2	9
\$500,000- \$549,999	--	1	96	4	6	33
\$550,000- \$599,999	--	--	--	1	2	14
\$600,000- \$699,999	--	2	42	14	8	47
\$700,000- \$799,999	1	1	4	10	12	12
\$800,000- \$899,999	--	1	2	9	10	25
\$900,000- \$999,999	--	1	18	10	10	23
\$1M - \$1.99M	1	5	53	104	97	25
\$2M - \$2.99M	2	3	19	64	60	29
\$3M+	1	3	89	62	50	82
Totals	5	18	45	294	268	36

Average & Median Sales Price - Last Two Years



Number of Sales - Last Two Years



Based on information from the Austin Board of REALTORS® (alternatively, from ACTRIS). Neither the Board nor ACTRIS guarantees or is in any way responsible for its accuracy. The Austin Board of REALTORS®, ACTRIS and their affiliates provide the MLS and all content therein "AS IS" and without any warranty, express or implied. Data maintained by the Board or ACTRIS may not reflect all real estate activity in the market.